



Committed to our

Community

2009 Community Benefit Report



Mount Sinai
MEDICAL CENTER

Mount Sinai: Mission Driven

To provide high quality health care to our diverse community enhanced through teaching, research, charity care and financial responsibility.

By furthering our mission, Mount Sinai raises the quality of health care in our community and improves the overall quality of life. The following report provides our 2009 community benefit data as well as some information on current activities in 2010.

Mount Sinai's \$1.3 Billion Economic Impact

Hospitals play a significant role in the health of the local economy. Using information developed by the U.S. Department of Commerce Bureau of Economic Analysis, Mount Sinai's annual Economic Impact is estimated at \$1.3 billion. Mount Sinai's capital and operational investments drive local expenditures by both individual households and related industries.

Mount Sinai employs more than 3,000 individuals at a total annual expense of more than \$200 million. Mount Sinai is the largest employer in Miami Beach and the 11th largest private employer in Miami-Dade County. In addition to our operational investments, Mount Sinai expended more than \$13 million in 2009 to strengthen our facilities and advance our technology. Mount Sinai also began a \$60 million, multi-year project to transition from paper-based medical records to an Electronic Health Record (EHR) system. By installing the Epic EHR system throughout our hospital, satellite centers and physician practices, we will use the power of information technology to further enhance patient care and safety.

Committed to Our Community By Providing More Than \$80 Million in Charitable Care

Mount Sinai is dedicated to the health of Miami-Dade County with special focus on our primary service area of Miami Beach and targeted areas with high incidence of heart and vascular disease. In 2009, Mount Sinai provided more than \$80 million in charitable and uncompensated care. Mount Sinai also provided more than 4,000 free health screenings and health education lectures on a number of topics from stroke awareness to cardiac disease prevention. Mount Sinai promotes healthy lifestyles and puts prevention into practice. On July 1, 2010, Mount Sinai became a tobacco-free campus.

Reaching Out to Our Community

We have expanded our services in Aventura and Hialeah, two areas with higher rates of death from cardiac disease and stroke. Our freestanding emergency room in Aventura seeks to improve access to care and has provided services to more than 30,000 people since it opened in 2008. Our Hialeah physician office specializes in the prevention and treatment of cardiac disease.

While other hospitals have closed their doors to less profitable programs such as maternal health, psychiatric and rehabilitation, Mount Sinai remains committed to its mission and continues to provide a full continuum of care.

Mount Sinai Mental Health Programs Serve Patients, Caregivers and the Community

One in four individuals suffers from mental health disorders. Mount Sinai is dedicat-

ed to helping individuals with a wide array of mental health issues from behavioral to dementia-related disorders.

Our Wien Center for Alzheimer's Disease and Memory Disorders is the largest outpatient diagnostic and treatment center of its kind in the state. The center has performed more than 8,000 free memory screenings, and offers treatment options and support for caregivers.

Innovative Maternal/Fetal Health Initiative Welcomes More Babies to Mount Sinai

Through unique and collaborative programs with Miami Beach Community Health Centers and Borinquen Health Care Center, Mount Sinai will assist under-served moms welcome new babies this year. Our Level III NICU provides advanced care for high risk deliveries.

Investing More than \$20 Million Annually to Train Future Health Care Providers

Mount Sinai continues to invest in the future of health care. We trained 160 residents and fellows in 18 medical specialties at a cost of more than \$20 million to ensure that our community has the outstanding doctors it needs for the future. We seek to innovate and collaborate to enhance our educational programs. In cardiology, our partnership with New York's Columbia University provides expanded faculty and learning opportunities. Mount Sinai's undergraduate medical education program supports more than 325 students from a number of medical schools, including the University of Miami, Florida International University, and Nova Southeastern. Additionally, Mount Sinai is preparing more than 500 allied health professionals for careers in a range of essential diagnostic, technical, therapeutic, direct patient care and support services.

Groundbreaking Research

In 2009 alone, Mount Sinai received more than \$5 million in grants from the National Institutes of Health to fund research in pulmonary, cardiology, cancer and memory disorders. Through research studies and clinical trials in these and other areas, we seek to gain a better understanding of the causes of human disease, giving our patients access to new treatment options before they are available to the public.

Addressing the Leading Causes of Death Through Our Centers of Excellence

Our commitment to medical excellence reduces mortality in our community and improves overall quality of life. Mount Sinai's dedication to high quality care has resulted in national recognition for its outstanding programs. Most notably, *U.S. News & World Report* has named our medical center one of America's Best Hospitals.

Leaders in Heart and Lung Treatment

Mount Sinai's cardiac surgeons have the best statistical outcomes in the state for complex, large-volume cases. Our innovative heart and lung interventions provide minimally invasive options not available at other regional hospitals.

Outstanding Cancer and Breast Care

We have the only National Institutes of Health-sponsored adult clinical oncology research program in Florida, and our comprehensive breast center is the first center in Florida accredited by the National Accreditation Program for Breast Centers.

Comprehensive Stroke Center

Mount Sinai gained accreditation as a comprehensive stroke center, one of only 16 in the state. Our advances in radiology, including MRI perfusion and neurointerventional procedures, have resulted in greater depth and breadth in stroke care for our patients.

Financial Stability

By remaining focused on our important mission and diligently managing our resources, Mount Sinai achieved a positive margin in 2009. We experienced an overall 5 percent growth in revenue from \$497 million in 2008, to \$524 million in 2009.

We are pleased to present our Community Benefit Report, which provides an overview of our positive health impact. We thank you for your support and look forward to continued growth and an ongoing commitment to delivering lifesaving results.

Sincerely,



Michael M. Adler
Chairman, Board of Trustees



Steven D. Sonenreich
President & CEO



TABLE OF CONTENTS

FOCUSING ON THE NEEDS OF OUR COMMUNITY	4
COMMUNITY BENEFIT REPORT 2009	7
SERVING OUR COMMUNITY	8
TEACHING FOR A BETTER TOMORROW	10
HEART INSTITUTE	12
Best Results	13
Quality Collaboration	15
Leaders in Minimally Invasive Cardiac Surgery	16
LUNG CENTER	18
Mount Sinai's Center of Excellence in Lung Care	19
Advanced Technology	20
CANCER CENTER	22
Mount Sinai's Center of Excellence in Cancer Care	23
Superior Lifesaving Technology	24
NEUROSCIENCES	26
Mount Sinai's Center of Excellence in Neuroscience	26
Focus on Mental Health	28
ORTHOPAEDICS	30
Mount Sinai's Center of Excellence in Orthopaedic Care	30
REHABILITATION	32
Mount Sinai Rehabilitation Center	32
DONORS MAKE A DIFFERENCE	34
ALWAYS HERE FOR OUR COMMUNITY	35

Focusing on the Health Needs of Our Community

Providing South Florida’s richly diverse communities with access to quality, patient-centered care is a key part of Mount Sinai’s responsibility. As a health care leader, Mount Sinai is committed to investing the necessary resources, time and personnel to deliver a full range of essential services where they are needed most.

Mount Sinai has already made a positive impact in Miami Beach, ensuring that our primary service area has access to the best care. However, Aventura and Hialeah, compared with Miami-Dade County overall statistics, show higher death rates from heart disease, stroke and cancer. In response, Mount Sinai has expanded its presence and services to make a lifesaving difference in these areas of need. Responding to elevated stroke levels in our community, Mount Sinai made the necessary investment to gain designation as a Comprehensive Stroke Center through the Agency for Health Care Administration. It is now one of only two Miami-Dade hospitals to meet the state’s requirements for advanced, comprehensive stroke care.

In Aventura, Mount Sinai’s state-of-the-art freestanding emergency room provides our patients with expert emergency care in the growing northeast Miami-Dade region. Since it opened, the ER’s highly skilled physicians, nurses and technicians have treated thousands of patients, operating around the clock. The most recent expansion into Hialeah includes a full-service cardiology practice, staffed with bilingual nurses and board-certified cardiologists who are leaders in the treatment and prevention of cardiovascular disease, the foremost cause of death in Hialeah.

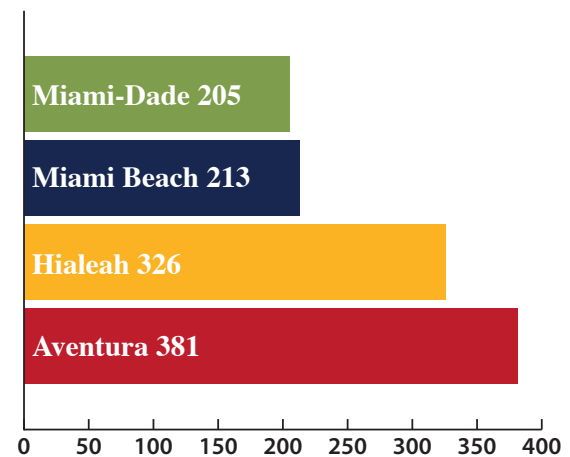
Mount Sinai continues to adjust to the changing demographics and the needs of our community. As a result, Mount Sinai offers vital services – from obstetrics to emergency care to outreach and support programs.

A Look at Our Community

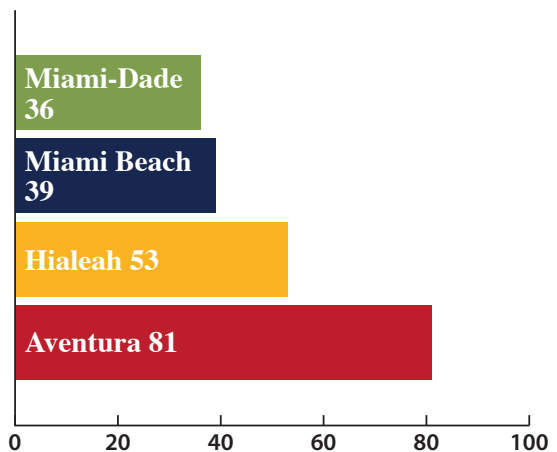
	Miami Beach & Barrier Islands	Miami-Dade County
Population	127,147	2,500,625
Median income	\$42,274	\$44,364
Male	49%	48%
Female	51%	52%
Hispanic of any race	45%	62%
White	88%	73%
Black	2%	20%
Overnight visitors	5 million	12 million

Source: U.S. Census Bureau, Population Division, taken from Annual Estimates of the Resident Population for Incorporated Places in Florida: April 1, 2000 to July 1, 2009.

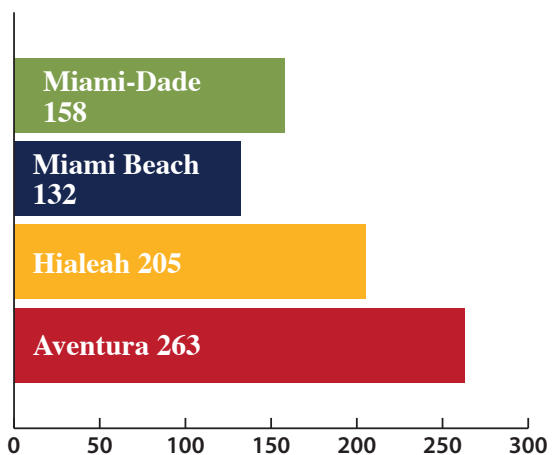
Leading Causes of Death, 2008 Miami-Dade County (Rate per 100,000 adults)



Heart Disease



Stroke



Cancer

Source: Miami-Dade County Health Department, December 11, 2009.

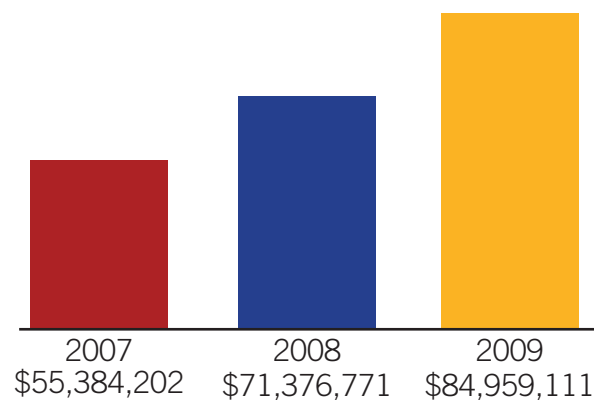
Meeting the needs of our
community is at the core
of Mount Sinai's mission
and everything we do.





Community Benefit Report 2009

Mount Sinai's annual economic impact is estimated at \$1.3 billion, driving local expenditures of both individual households and related industries.

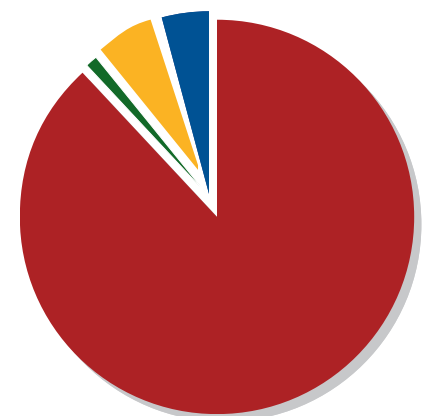


Charitable Care and Uncompensated Charges 2007-2009

- **53 percent increase** since 2007
- **87 percent** of charity care comes through the ER

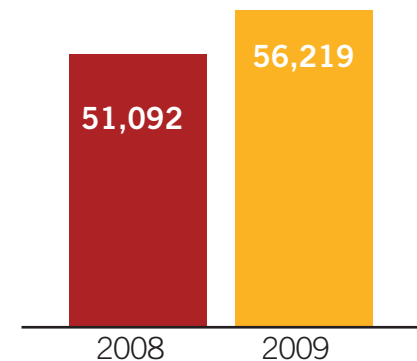
Mount Sinai Medical Center:

- Delivered 1,734 babies and will deliver more than 2,100 babies in 2010
- Admitted 21,682 patients
- Performed 12,202 surgeries
- Administered 4,000 free screenings
- Provided 1,800 H1N1 vaccines
- Trained 160 residents and fellows, more than 325 undergraduate medical students, and 500 allied health professionals
- Received more than \$5 million in National Institutes of Health Research Funding



Economic Impact Through Wages and Capital Investments

Salaries, Wages and Benefits	\$192,376,000
Research Salaries	\$2,994,000
Capital Investments	\$13,929,000
Intern and Resident Salaries	\$9,168,000
Total	\$218,467,000



ER Visits 2008-2009

Mount Sinai: Serving Our Community

Mount Sinai Medical Center is committed to improving the health and well-being of our community. We remain focused on providing the most advanced procedures, training the next generation of doctors, searching for new treatment options through cutting-edge research, and assuring that our community has access to medical care when they need it most.

Outreach and Health Awareness

Each year, Mount Sinai reaches out to the community through neighborhood health screenings provided at no cost in key locations throughout Miami-Dade County. Our screenings for cholesterol, diabetes and peripheral artery disease, among others, provide vital information that helps participants make informed decisions about their health. In 2009, Mount Sinai provided free screenings for more than 4,000 people in Miami-Dade County.

Lecture Series

Mount Sinai is also proud to offer monthly educational lectures on a variety of important health topics, such as:

- Heart health
- Colorectal cancer awareness
- Peripheral artery disease
- Pneumonia prevention
- Atrial fibrillation
- Memory loss
- Stroke prevention
- Spinal surgery
- Innovations in oncology
- Healthy eating
- The latest treatment options for breast cancer
- Stress management
- Prostate cancer awareness

Health Education – Connecting Our Community

Mount Sinai participates in health fairs and forums organized through partnerships with area civic groups and government organizations. We also lead multiple grassroots initiatives aimed at raising awareness about health care and wellness.

These include:

- Radio shows dedicated to raising awareness on vital health topics and preventive care
- Complimentary e-newsletter with interesting and useful health information
- Healthy Connections, a community outreach program that offers participants complimentary CPR training and access to health screenings and wellness events
- Support groups offering patients and family members the opportunity to meet and share concerns and information

Patient-Focused Services

- Geriatric House Calls, a program that serves homebound, frail, elderly residents who are unable or unwilling to go to a doctor's office to receive medical care
- Pastoral care services
- Volunteer services, which coordinates more than 400 individuals who dedicate their time and talents to help Mount Sinai meet its mission

Community Service

Our employees understand the importance of community service, which is why they help support numerous local charities through the Mount Sinai C.A.R.E.S. (Community Activities Reflecting Employee Service) initiative. From providing school supplies for underprivileged children, to donating clothing to the homeless, providing holiday meals for the elderly, and much more, Mount Sinai's 3,000-plus employees continuously demonstrate that they truly care about their community.

Responding to Our Global Community

Following the devastating earthquake that struck Haiti, Mount Sinai deployed a team of doctors and nurses equipped with vital medical supplies and medications to Port-au-Prince to offer critical, badly needed medical care. Hospital employees donated clothing and other supplies in support of the countless victims of the quake.





LILA AND HAROLD MENDOWITZ

CANDACE AND LLOYD L. RUSKIN

ABRIEL AND MAX L. COHEN

GERTRUDE AND JACK R. COOPER

AND FERNAND RUIZ

STEPHEN AND

FORN E AND MARC A. GOROFF

DR. GEORGE

NANCY AND ENRIQUE H. SANTER

CAROL R. AND DR. THOMAS SASSI

ROSEMARY

THE HILL

ICLA AND DONALD

MAURICE T

PROSENE SCHERLING

ANNE AND MAC GACHÉ

RIC

ELIZABETH A. AND MITCHELL TAYLOR

SYLVIA AND THEODORE SCHWARTZ

MARSHA AND JAMES BERG

DORIS C. AND NATHANIEL B. ELKINS

ROZ AND CAL KOVENS

MARJORIE AND LEONARD A. WIEN

DEBORAH R. AND BERNARD FETERSON

SONIA AND MAURICE COHEN

FLORENCE M. AND SAUL H. ABRAHAM

GLADYS AND MARTIN I. CIEB

REVEREE AND EMILY H. SHINE

ALLAN

EDMUND

ent

Teaching for a Better Tomorrow

Florida is among the states with the lowest number of physicians in relation to population and, according to the Association of American Medical Colleges, one-quarter of Florida's practicing physicians are over the age of 65. These are just two of the many reasons why Mount Sinai Medical Center remains committed to its teaching mission.

An Investment in Doctors for Florida's Future

Mount Sinai is one of only six statutory teaching hospitals in the State of Florida. The hospital's graduate medical education program includes 160 residents and fellows training in 18 medical specialties. We seek to innovate and collaborate to enhance our educational programs. In cardiology, our partnership with New York's Columbia University provides expanded faculty and learning opportunities. Mount Sinai's undergraduate medical education program supports more than 325 students from a number of medical schools, including the University of Miami, Florida International University and Nova Southeastern University. Mount Sinai invests more than \$20 million annually in its teaching program, underscoring its long-term commitment to fostering the next generation of doctors.

Teaching Makes the Difference

As a teaching hospital, Mount Sinai provides patients with a higher level of care. Its doctors, nurses and researchers practice progressive medicine while passing along medical knowledge and expertise to the next generation. This academic setting challenges the medical and nursing staffs to keep pace with new advances, thereby raising the overall standard of care.

Mount Sinai trains residents and fellows in the following medical specialties:

- Anesthesiology
- Breast Imaging
- Cardiology
- Cardiothoracic Surgery
- Dermatology
- Emergency Medicine
- Gastroenterology
- General Surgery
- Infectious Disease
- Internal Medicine
- Interventional Cardiology
- Nuclear Medicine and Ultrasound
- Pathology
- Pediatrics
- Physical Medicine and Rehabilitation
- Podiatry
- Radiology
- Surgical Oncology

Allied Health Professionals

Allied health professionals – nurses, technicians, therapists and pharmacists – help provide the full range of care patients require. Through affiliations with the University of Miami, Florida International University, University of Florida, Barry University, Nova Southeastern University and other institutions, Mount Sinai is preparing more than 500 students for careers in a range of essential diagnostic, technical, therapeutic, direct patient care and support services.



“As a teaching hospital, Mount Sinai provides patients with a higher level of care.”

– GERVASIO A. LAMAS, M.D.,
Chief, Columbia University Division of Cardiology at Mount Sinai Medical Center



“I couldn’t have
asked for a better
surgical experience.”

– ANGELA LAVERNIA,
Mount Sinai Heart Institute Patient



Best Results

Mount Sinai Medical Center is South Florida's leader in the treatment of heart disease, the nation's leading cause of death. Mount Sinai's affiliation with New York's prestigious Columbia University combines the strengths of two leaders in cardiovascular care, enhancing the outstanding level of quality care and access to state-of-the-art technology and research.

The Mount Sinai Heart Institute performs more of the most advanced minimally invasive cardiothoracic surgeries than any other hospital in the state. Mount Sinai has the best survival rates in the state for complex, large-volume cases, according to the Florida Agency for Health Care Administration.

Heart Institute's Centers of Excellence

- Cardiac Surgery
- Heart Rhythm Disorders
- Catheterization Interventions
- Isabel and Sam May Non-Invasive Cardiac Diagnostic Imaging Center
- Chronic and Acute Coronary Disease
- Cardiac Rehabilitation
- Heart Failure

The Mount Sinai Heart Institute Advantage

- The most experience in minimally invasive heart surgery in Florida
- Best results in the state, getting most patients back to normal lifestyle in two weeks
- Research protocols including stem cell infusions
- Advanced heart rhythm procedures
- Emergency chest pain center

Saving Lives

"In early April, I was feeling very tired, had a lot of back pain and shortness of breath but I didn't understand why. Until one day I had to be rushed to an emergency room. After many tests, the doctors discovered that I had a heart problem. The doctors told me that I would need open-heart surgery, but I wanted a second opinion.

Once home, my husband as well as some coworkers told me I should go to Mount Sinai to see Dr. Joseph Lamelas. I scheduled an appointment and I am glad I did.

He did confirm my fears that I would need heart surgery. But I was relieved when he told me that we could avoid open-heart surgery and that he would perform minimally invasive heart-valve surgery.

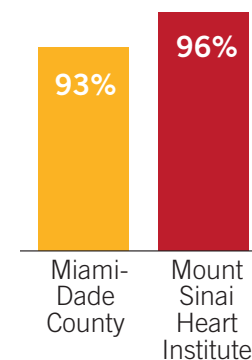
I couldn't have asked for a better surgical experience. Dr. Lamelas guided me through the whole process. Everyone, from the doctors to the nurses, was very attentive. Because of the new, less-invasive techniques, I was home after four days and back to normal after 23 days. I have been able to maintain a healthier lifestyle, and I couldn't be happier."

– Angela Lavernia, Mount Sinai Heart Institute patient

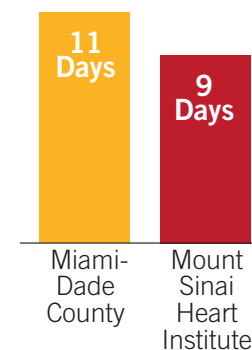
SUPERIOR RESULTS

Survival rates and recovery times for cardiac surgery at Mount Sinai Heart Institute are better than the average for Miami-Dade; figures are percentages by which Mount Sinai exceeded expected results for 2009.

Best Survival Rate

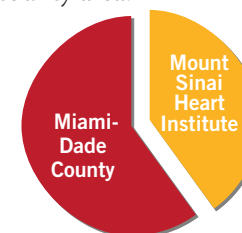


Shorter Recovery Time



Most Heart Valve Operations

Mount Sinai performs 42 percent of the valve operations in Miami-Dade county, 21 percent in the tri-county area.



Source: American Health Care Association (AHCA)



Mount Sinai HEART INSTITUTE

A PARTNERSHIP WITH NEW YORK
COLUMBIA UNIVERSITY

Mount Sinai's partnership with New York's Columbia University is the only Ivy League collaboration of its kind in South Florida, providing unique benefits to our cardiovascular patients.



Quality Collaboration: Columbia University Partnership

Mount Sinai joined forces with New York's prestigious Columbia University to create the Mount Sinai Heart Institute, the only Ivy League collaboration of its kind in South Florida. As doctors join together to share knowledge, experience and technology, this means better care for South Floridians and a new level of seamless care for patients who travel between Miami and New York.

Part of this collaboration involves Mount Sinai and Columbia sharing educational conferences. Professors from Columbia University participate in Grand Rounds and enhance the teaching experience. In addition, the fellows and faculty share cardiac conferences that take place at Columbia University via teleconference.

Innovative Research

"Patients also have access to more innovative research, thanks to our affiliation with Columbia University," said Gervasio A. Lamas, M.D., chief, Columbia University Division of Cardiology at Mount Sinai Medical Center. Dr. Lamas is co-chair for the Occluded Artery Trial (OAT) and study chair for the Trial to Assess Chelation Therapy (TACT), a \$30 million trial sponsored by the National Institutes of Health. Over the past decade, he has enrolled thousands of patients in national and international trials. Recently, Mount Sinai began participation in an adult stem cell research trial, which may help heart attack victims regrow damaged tissue.

Awards and Recognition

- Designated a UnitedHealth Premium Cardiac Specialty Center since 2007
- Mount Sinai's echocardiography lab is accredited by the Intersocietal Commission for the Accreditation of Echocardiography Laboratories (ICAEL). Recognized for its commitment to quality diagnostic testing for heart disease, Mount Sinai's echocardiography laboratory also includes specialized 3D echo imaging.

Leaders in Minimally Invasive Cardiac Surgery

Mount Sinai Heart Institute's top-rated cardiothoracic surgery team is under the leadership of Joseph Lamelas, M.D., an internationally renowned pioneer in minimally invasive valve surgery. Dr. Lamelas has some of the best results in both the state and nation, and his team attracts patients from around the world.

Dr. Lamelas' innovative minimally invasive approach, exclusive to Mount Sinai, reaches the valves through a small incision. He has performed more than 8,000 cardiac surgeries, of which more than 1,200 are minimally invasive, making him the most experienced cardiac surgeon in minimally invasive valve repair in the region.

Advantages of Minimally Invasive Cardiac Surgery

- Reduced pain and trauma
- Faster recovery
- Less blood loss
- Quicker return to normal lifestyle
- Lower risk of infection
- Minimal scarring
- Shorter hospital stay
- Significantly reduced risk factors for future operations

Innovations in Cardiac Surgery

• Hybrid approach for patients with coronary and valve disease

In late 2009, the surgeons and cardiologists at the Mount Sinai Heart Institute developed a highly effective approach to cardiac surgery for very high-risk patients with coronary and valve disease.

• Hybrid MAZE procedure for patients with atrial fibrillation

Mount Sinai Heart Institute is the region's leader in this approach, which combines minimally invasive cardiac surgeons with electrophysiology.

• Structural Valve Center of Excellence

Mount Sinai was selected to participate in a study to repair heart valves percutaneously (without surgery).

• High-risk patients

Patients with very poor heart function, the extreme elderly, obese patients and patients requiring redo operations, especially for aortic and mitral valve disease, are now candidates for minimally invasive cardiac surgery.

At the Forefront in Technology

• Cardiac imaging

Mount Sinai's physicians are board-certified in echocardiography, spectroscopy, angiography, coronary CTA and cardiovascular MRI. Expert cardiac imaging interpretation helps assure the most effective treatment plan for each patient.





“Our primary
commitment
is to our patients.”

– JOSEPH LAMELAS, M.D., Chief of Cardiac Surgery



Specialists at Mount Sinai's Lung Center meet regularly to evaluate test results and coordinate each patient's care.



Mount Sinai's Center of Excellence in Lung Care

Mount Sinai Medical Center's integrated, multidisciplinary Thoracic Oncology Program brings together physicians from several different specialties who work collaboratively to chart the most effective course of treatment for patients with lung cancer and other thoracic malignancies. The physicians, whose specialties include oncology, radiation oncology, radiology, pathology, thoracic surgery and pulmonary medicine, meet to review cases, evaluate test results and coordinate each patient's care.

"The Thoracic Oncology Program not only adds tremendous value to a patient's disease management by improving overall care, but it is much more efficient for both patient and physician," said Rogerio Lilenbaum, M.D., FACP, director of Mount Sinai's Thoracic Oncology Program.

"What we've created here over the past 10 years is a great working example of how to collaborate and communicate across specialties," said Dr. Lilenbaum, who is also co-principal investigator of the Community Clinical Oncology Program (CCOP) and a noted expert in the diagnosis and treatment of lung cancer.

"Mount Sinai's commitment to state-of-the-art technology assures that its diagnostic and surgical capabilities for thoracic oncology are continually improving," said Roy Williams, M.D., thoracic surgeon.

Clinical Trials Exclusive to Mount Sinai

Thoracic oncology patients have access to cutting-edge research through Mount Sinai's CCOP, the only adult clinical research program in the state of Florida funded through a grant from the National Cancer Institute and the National Institutes of Health.

Dr. Lilenbaum and Michael Samuels, M.D., vice chairman of the Department of Radiation Oncology and CCOP co-principal investigator, were instrumental in initiating a national study for treating patients with stage 3 non-small cell lung cancer. In this clinical trial, researchers study the effectiveness of induction chemotherapy, followed by radiation therapy in conjunction with the medication Erlotinib. Another promising national study for early stage non-small cell lung cancer evaluates a molecular-based tumor model that stratifies patients for risk of cancer recurrence, allowing a more rational method to select appropriate patients for chemotherapy.

Advanced Technology

Mount Sinai is a leader in technological advances in the field of minimally invasive thoracic surgery. Patients experience reduced trauma to muscles, tissues and nerves; less overall pain; a shorter hospital stay; fewer complications; faster recuperation; and a quicker return to normal activities.

Robotic Video-Assisted Minimally Invasive Thoracic Surgery

Minimally invasive robotic thoracic surgery is a relatively new and extremely promising procedure available primarily at academic medical centers. Mount Sinai thoracic surgeon Roy Williams, M.D., is one of only a few surgeons in the nation with experience in the procedure. He incorporates the robotic platform into minimally invasive surgeries for localized early stage lung cancer.

“It’s a big advantage for patients,” Dr. Williams said. “The visualization is better, thanks to a 3D high-definition camera, and the instrumentation is finer. The incisions are smaller, which means less soft tissue damage, less rib spreading, reduced blood loss, a lower risk of infection and a shorter hospital stay. It also means that we can operate minimally invasively on more high-risk patients, such as older patients.”

Endobronchial Ultrasound (EBUS)

EBUS is a relatively new technology that allows for a minimally invasive, highly effective means of diagnosing lung cancer and other diseases through ultrasound. Mount Sinai is one of only three medical centers in South Florida with this technology.

Optiflow™

This high-flow, heated, humidified oxygen therapy is a non-invasive approach to delivering oxygen through the nostrils. Used for many types of respiratory failure, Optiflow eliminates the need to place certain patients on a mechanical respirator. Mount Sinai is the only hospital in South Florida using this technology.

Respiratory Recovery Program

This acute-care program provides transitional care for respiratory patients after they leave the Intensive Care Unit. It uses a multidisciplinary approach in a closely monitored, supportive environment to improve breathing and lung function and maximize each patient’s recovery.

Pulmonary Care

Mount Sinai’s Lung Center provides a wide breadth of pulmonary services as part of its commitment to comprehensive, state-of-the-art care. Highlights include:

Pulmonary Hypertension Clinic

Mount Sinai offers a weekly clinic with South Florida’s only multidisciplinary team specialized in pulmonary hypertension.

Medical Intensive Care Unit (MICU)

Every day, pulmonologists address the respiratory needs of critically ill patients in the MICU. This service has extensively reduced the time patients spend on mechanical ventilators in the MICU.

Pulmonary Function Testing Laboratory

Patients from throughout Miami-Dade County and beyond seek testing and treatment at Mount Sinai’s laboratory, widely recognized as a center for the evaluation of both adults and children experiencing unexplained shortness of breath.

Sleep Laboratory

Mount Sinai has a fully accredited sleep lab for the evaluation and treatment of sleep apnea and other sleep disorders.





“I am so thankful for the treatment I received at Mount Sinai’s Lung Center of Excellence. I was diagnosed with stage IV advanced lung cancer in November of 2008. I was, of course, extremely frightened by the news. I went to Mount Sinai for a second opinion and received treatment as part of a research program at the center. Everyone – from the receptionist, to the nurses and the doctors – was so kind and caring. I felt warmly and graciously welcomed, as though I were a family member coming home. And they treated me like I was their only patient. In May 2009, my lung cancer went into remission and it is still in remission to this day. I will always be grateful for the kindness and care I received at Mount Sinai.”

– ELIZABETH KUHN, Mount Sinai Lung Center patient

The award-winning cancer treatment program cares for the whole person – body, mind and spirit.



Mount Sinai's Center of Excellence in Cancer Care

Mount Sinai Medical Center's Comprehensive Cancer Center takes a collaborative, multidisciplinary approach to diagnosing and treating cancer. The award-winning cancer treatment program cares for the whole person – body, mind and spirit. Medical, radiation and surgical oncologists work together with a support team of psychologists, social workers, pain specialists and nutritionists to create customized treatment plans. As an academic medical center, you can take comfort in knowing our doctors are at the forefront of medical research and lead clinical trials.

National Cancer Institute Clinical Trials

The prestigious, grant-funded Community Clinical Oncology Program (CCOP) – created by the National Cancer Institute (NCI) – is a nonprofit, community-based program that provides clinical research to cancer treatment patients and those who may be at risk. The program allows Mount Sinai patients to participate in promising clinical trials offering cutting-edge treatment options before they become widely available.

Mount Sinai is:

- The only adult oncology program in Florida funded by the National Cancer Institute (NCI)
- Active in more than 50 clinical trials
- One of 61 major research centers nationwide participating in the program

Multidisciplinary Support Services

• **Patient Navigator**

Unique program teaming a trained social worker with the patient throughout the diagnosis and treatment process.

• **Psychosocial services**

Psychologists, social workers and a support team address emotional needs. Cost-effective individual and family counseling, support groups, meditation and art classes are available.

Comprehensive Breast Center

Mount Sinai Medical Center's Comprehensive Breast Center was the first center in Florida to be accredited by the National Accreditation Program for Breast Centers (NAPBC), devoting itself to early detection, diagnosis, treatment, support and follow-up care. In- and outpatient services cover screening and diagnostic mammographies, high-tech biopsy procedures, sophisticated imaging and other diagnostic services.

- Mount Sinai is one of a handful of hospitals in South Florida to offer breast MRI with MRI-guided biopsies for breast cancer diagnoses.
- The Breast Center uses ultrasound as a diagnostic tool and for screening women with dense breast tissue.

LEADERS IN CANCER CARE

- Site of the National Cancer Institute's elite Community Clinical Oncology Program
- Consecutive winner of "Outstanding Achievement Award" from Commission on Cancer (CoC) of the American College of Surgeons – one of only two cancer programs out of 1,400 CoC-approved cancer centers in the nation to receive the award
- One of two hospitals in South Florida to be a CoC-approved center
- The Comprehensive Breast Center was the first center in Florida to be accredited by the National Accreditation Program for Breast Centers (NAPBC).
- Through Mount Sinai's research and clinical trials, patients have access to groundbreaking treatments years before they are widely available to the general public.
- A multidisciplinary team of radiologists, pathologists, surgical oncologists, medical oncologists and radiation oncologists meet weekly to review complex cases, discuss innovative treatment options and coordinate care across specialties.
- Mount Sinai offers special programs for thoracic oncology, melanoma, GI, prostate, and head and neck cancers.

Superior Lifesaving Technology

Mount Sinai is dedicated to using state-of-the-art equipment in its treatment of cancer:

- Full service breast imaging, including digital mammography, breast ultrasound and breast MRI
- Innovative Rapid Arc technology for treating cancer more precisely and with greater patient comfort
- First hospital in Florida to acquire and house the Evident Microwave Ablation System to destroy tumors of the liver, lung and kidney, and treat other forms of soft-tissue cancers
- DaVinci robotic surgery for treating prostate cancer
- Trilogy™ system for radiosurgery for patients with small tumors in which surgery would be impractical

Risk Counseling/Genetic Testing

Mount Sinai offers hereditary, environmental and behavioral cancer risk counseling and blood analysis and breast cancer risk assessment through a review and analysis of family, medical and surgical history.

Advanced Surgical Care

Mount Sinai offers a number of surgical specialties:

- Advanced options for patients with cancers of the breast, thyroid, head and neck, skin, liver and intestinal tract
- Biopsy, endoscopy and sentinel node staging for tumor diagnosis
- Minimally invasive procedures such as laparoscopic surgery and non-surgical ablation, the destruction of tumors through freezing, heat and radiofrequency
- Research department active in the application of the latest techniques for operating on malignant tumors

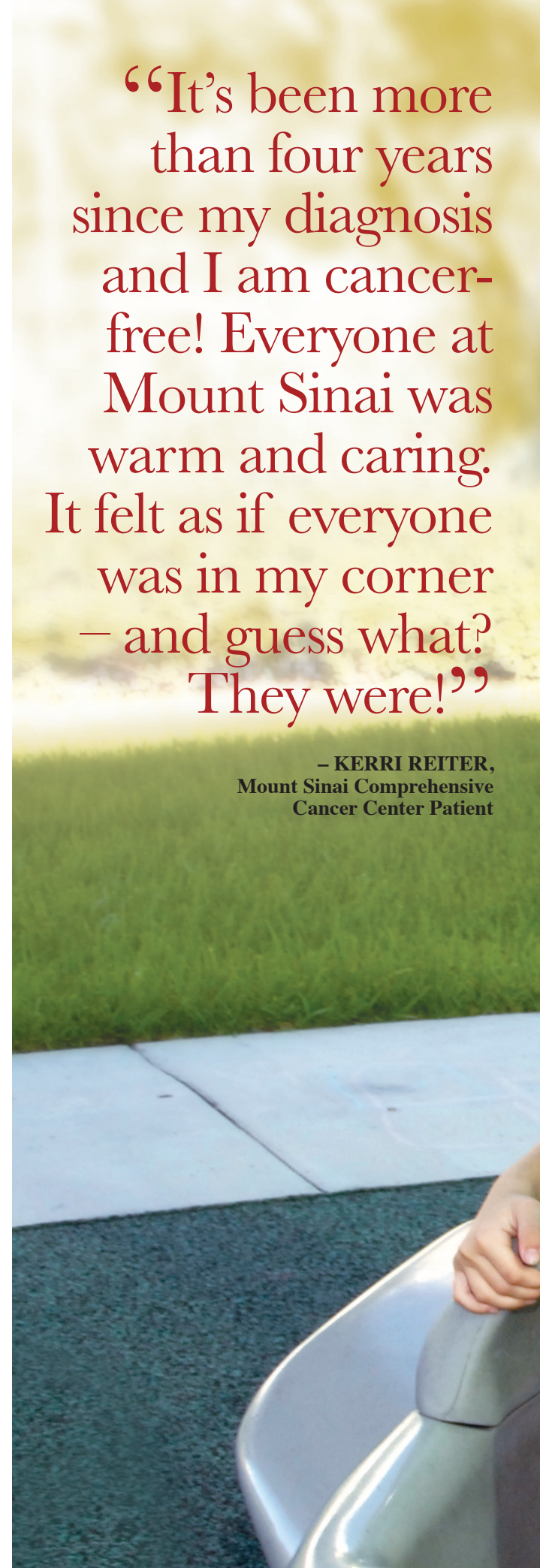
The Best Treatment

In May of 2006, just before Mother's Day, I was diagnosed with stage 3 triple-negative breast cancer. I was 37 years old with a 2½-year-old daughter and I had given birth to my second baby girl just four months prior. My OB, who practices at Mount Sinai, referred me to the Mount Sinai Comprehensive Cancer Center right away. That's where I had the ultrasound, biopsy and the whole gamut of tests. All the specialists on my Mount Sinai Comprehensive Cancer Team, as I like to call them, worked together to give me the best treatment, advice, direction and support that a cancer patient so desperately needs. My treatment consisted of aggressive chemotherapy, bilateral mastectomies and extensive radiation therapy. It's been more than four years since my diagnosis and I am cancer-free! Everyone at Mount Sinai was warm and caring. It felt as if everyone was in my corner – and guess what? They were!

– Kerri Reiter, Mount Sinai Comprehensive Cancer Center patient

“It's been more than four years since my diagnosis and I am cancer-free! Everyone at Mount Sinai was warm and caring. It felt as if everyone was in my corner – and guess what? They were!”

– KERRI REITER,
Mount Sinai Comprehensive
Cancer Center Patient





Mount Sinai's Center of Excellence in Neuroscience

For two consecutive years, *U.S. News & World Report* has ranked Mount Sinai Medical Center among the nation's best hospitals in neurology and neurosurgery. Mount Sinai's Center of Excellence in Neuroscience provides innovative diagnostic and treatment options for a wide array of neurological maladies, from Alzheimer's disease to acute stroke.

Mount Sinai Comprehensive Stroke Center: Pioneer in Stroke Treatment

The Joint Commission recognizes two levels of stroke care – Primary and Comprehensive. Mount Sinai is one of only two hospitals in Miami-Dade (and only 16 in the state) to provide comprehensive stroke center services accredited by the Agency for Health Care Administration.

Innovative Diagnostic and Treatment Options

"At Mount Sinai Medical Center, state-of-the-art technology, including our advanced MRI imaging dedicated to the memory of Dorothy Whitman, is available to the neuroscience team. Neurologists, neurosurgeons, interventional pain specialists, interventional neuroradiologists, medical oncologists, radiation oncologists, endocrinologists and rehabilitative physicians work together so that patients can receive individualized, up-to-date care," says Allen Bernard Kantrowitz, M.D., chief of Neurosurgery at Mount Sinai. Mount Sinai's Center of Excellence in Neuroscience includes:

- Microsurgery of the brain
- Care of patients with spinal conditions
- Skull base surgery
- Neurointerventional radiology with advanced 3D computerized visualization technology

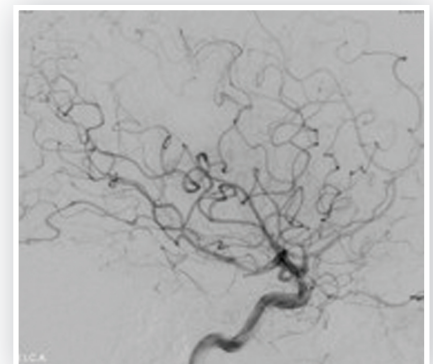
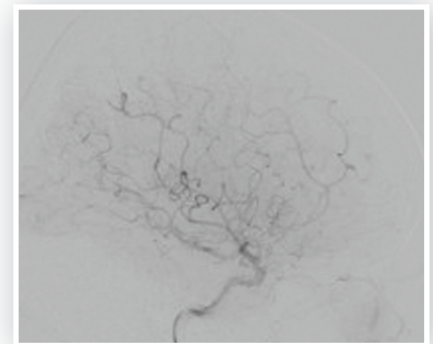
HARVEY R. CHAPLIN FAMILY EMERGENCY STROKE AND CHEST PAIN CENTER

Stroke and heart disease are the leading cause of death in the community. Thanks to the generosity of the Chaplin family, we have an advanced angio suite for the neurointerventional treatment of stroke. Mount Sinai is one of only three hospitals in Miami-Dade offering a unique, state-of-the-art procedure to treat ischemic strokes. Using advanced imaging and ground-breaking catheterization techniques, neurointerventional radiologists are able to access tiny, distal veins in the brain and restore blood flow.

A New Lease on Life

"I was speaking at a medical conference in Miami when my speech became slurred. When I heard myself speaking, I thought something was wrong. I was rushed to Mount Sinai Medical Center, where neurointerventionalist Alex Barrocas, M.D., discovered that one of my arteries was partially blocked. He used a technique to dissolve the clot immediately, saving the right side of my brain. Neurologically, all the paralysis is gone. Without the help I received at this fine institution, I would not be experiencing my current level of function. I am fully recovered, I'm carrying a complete operating schedule, and I am continuing my academic work. Being able to say 'thank you' is the least I can do for all the fabulous care I received."

– R. Barrett Noone, M.D., FACS,
Stroke Center patient



Dr. Noone's blood flow before (top) and after (bottom) undergoing the minimally invasive procedure that saved the right side of his brain.

“Without the help I received at this fine institution, I would not be experiencing my current level of function. I am fully recovered ... Being able to say ‘thank you’ is the least I can do for all the fabulous care I received.”

– R. Barrett Noone, M.D., FACS, Stroke Center Patient



Dr. Noone and his wife enjoying the company of eight of their nine grandchildren.

Focus on Mental Health

Behavioral Health Program Serves Patients, Caregivers and the Community

According to the National Alliance on Mental Illness, one in four adults – approximately 57.7 million Americans – experience a mental health disorder in a given year. One in 17 lives with a serious mental illness such as schizophrenia, major depression or bipolar disorder. The economic impact is great, as more than 30 percent of all homeless people suffer from some sort of mental health disorder.

Mount Sinai's adult behavioral health program seeks to help individuals with a full spectrum of emotional and behavioral health issues, from anxiety to dementia, bipolar disorder and depression. Mount Sinai's 99-bed inpatient unit provides treatment for individuals to improve their daily lives.

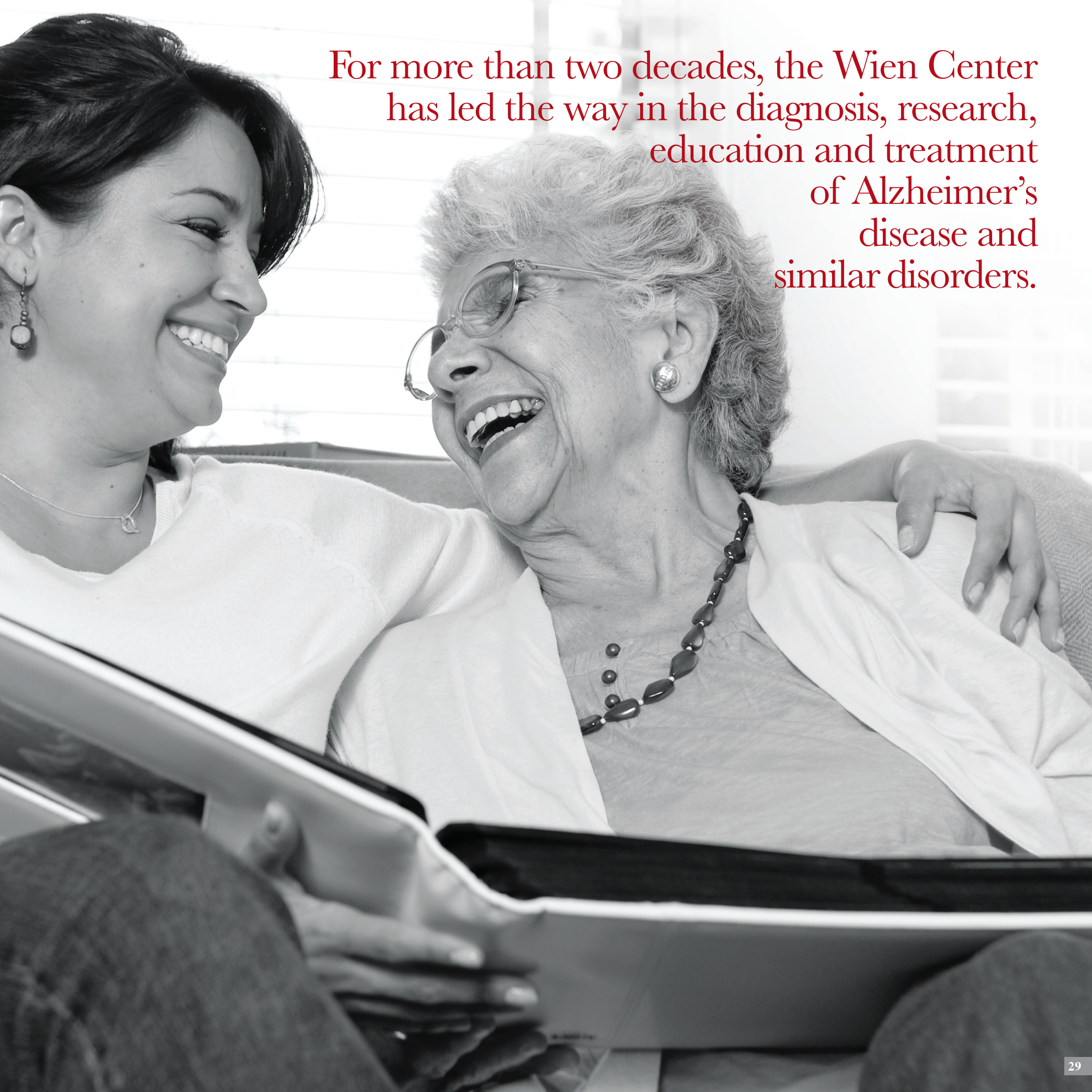
Wien Center for Alzheimer's Disease and Memory Disorders

For more than two decades, the Wien Center has led the way in the diagnosis, research, education and treatment of Alzheimer's disease and similar disorders.

- Awarded grants from the National Institutes of Health (NIH)
- One of the largest centers in the southeastern United States
- Pioneered diagnostic scales, including Visual Rating Scale (RVS), Caregiver Scale and Clinical Dementia Rating Scale
- Actively conducting more than 21 research studies about Alzheimer's and other memory disorders
- Last year, Mount Sinai provided a total of 174 free memory screenings in the community



For more than two decades, the Wien Center has led the way in the diagnosis, research, education and treatment of Alzheimer's disease and similar disorders.



Mount Sinai's Center of Excellence in Orthopaedic Care

Joint Repair and Replacement

One of Mount Sinai Medical Center's strengths is a focus on minimally invasive surgeries. "The most state-of-the-art techniques in minimally invasive surgery are being performed here at Mount Sinai," said Marc E. Umlas, M.D., chief of Mount Sinai's Division of Orthopaedic Surgery, who has performed thousands of such surgeries. In addition to pioneering several minimally invasive procedures, Mount Sinai's orthopaedic surgeons regularly train physicians from around the country, are active in research, and work with medical companies to refine surgical techniques and tools.

Dr. Umlas has developed techniques and instrumentation for minimally invasive hip replacements and for fractured hips, which require a small 2½-inch incision. This technique virtually eliminates infections and radically improves recovery time. "A number of widely used techniques in minimally invasive joint replacement surgery were developed here in the last 10 years," he said. From joint sparing to total joint replacement, Mount Sinai orthopaedic surgeons work with each individual to provide the best option to optimize their mobility and lifestyle.



“The most state-of-the-art techniques in minimally invasive surgery are being performed here at Mount Sinai.”

– MARC E. UMLAS, M.D.,
Chief of Mount Sinai’s Division of Orthopaedic Surgery

Spine Surgery

Mount Sinai’s spine surgeons have been at the forefront in developing minimally invasive spine surgery techniques for more than a decade. Minimally invasive lumbar artificial disk replacement is one of the newest procedures offered by the hospital’s spine surgeons. Mount Sinai is the only South Florida participant in a multicenter research study of this promising new approach. Spine surgeons at Mount Sinai also are pioneering a new procedure of the minimally invasive treatment for spinal stenosis. It enables doctors to complete multiple levels of spinal decompression surgery through a one-inch incision and remove arthritis in previously difficult-to-reach areas. From scoliosis to degenerative disk disease to tumors, Mount Sinai’s spine surgeons offer the most advanced techniques.

Emergency Orthopaedic Surgery

The orthopaedic emergency team at Mount Sinai is available 24 hours a day to provide care for people who experience a traumatic accident or injury. The orthopaedic surgeons provide treatment for major and minor fractures, nerve and tendon injuries, dislocations and other orthopaedic injuries. Leaders in minimally invasive procedures for highly specialized reconstructive surgeries, Mount Sinai’s emergency orthopaedic team’s treatments include:

- Acute and subacute fractures
- Complicated fractures, including pelvic, hip and joint, as well as multiple extremity fractures and fracture dislocations
- Non-healing fractures
- Complex orthopaedic reconstruction or osteomyelitis
- Minimally invasive procedures to insert and anchor plates – resulting in less scarring, faster healing and fewer complications
- Minimally invasive hand and shoulder procedures using the latest micro-surgical techniques
- Our upper extremity surgeons provide comprehensive care to patients with conditions ranging from sports and work injuries to degenerative and congenital problems.

Mount Sinai's Rehabilitation Center

Comprehensive Inpatient and Outpatient Programs

For more than 25 years, Mount Sinai Medical Center has offered comprehensive, individualized inpatient and outpatient rehabilitation programs, making it a regional leader. These well-established, highly effective and fully accredited programs are distinguished by the breadth of services offered, their collaborative, multidisciplinary approach and their focus on customizing services for each patient. The goal of both inpatient and outpatient therapy is the same: to get patients back to their normal routines as quickly, fully and safely as possible. Multilingual staff members work intensively with each patient to maximize continual improvement as they proceed with their rehabilitation.

Mount Sinai's rehabilitation services blend personalized therapy with creative new approaches to restore function and maximize independence. Using a team approach of skilled physical, occupational and speech therapists, Mount Sinai's inpatient rehabilitation programs are able to return patients home with a length of stay two days shorter than other facilities throughout the nation while consistently demonstrating excellent results. Patients who complete the rehabilitation program also function at higher levels (using standardized functional measures) upon discharge as compared to patients at other facilities. Patients of Mount Sinai's neurological rehabilitation program in particular performed 15 percent better than those in the southeast United States.

Specialized Therapy

Mount Sinai offers a full range of rehabilitation services including:

- Cardiac rehabilitation
- Neurological rehabilitation for stroke victims and others
- Orthopaedic rehabilitation
- Hand therapy
- Lymphedema management
- Pediatric therapy

Unique to Mount Sinai is an innovative fast-track program for younger patients who are recovering from injuries or surgery. Rather than being sent home prematurely or to a nursing facility, these patients spend five to six days working intensively with therapists on a program tailored to their needs that is designed to get them fully functioning as quickly as possible.



Mount Sinai uses technologies, such as the Nintendo Wii™, to get patients back to their normal routines as quickly as possible.

Donors Make a Difference

Philanthropy has always played a role in our medical center's history, dating back to 1949 when a group of visionary leaders worked together to establish a hospital on Miami Beach to provide access to individuals from all backgrounds and beliefs.

Each donor, whether as an individual or part of a group, has demonstrated a heartfelt commitment to the hospital. From making gifts in support of our centers of excellence in cardiac, cancer, neurosciences and orthopaedic care, to purchasing equipment to meet the needs of our tiniest newborns, our donors have always been there – ready to give of their time, talents and resources to benefit our community when they need it most.

You Can Make a Difference

You can make a one-time, tax-deductible charitable gift to the hospital or join one of our donor organizations – there are dozens of ways to make a difference. Call the Foundation at 305-674-2777 to speak with a personal representative, visit www.ms.foundation.org to make an online donation or simply text the word SHARE to 27722 and donate \$10 instantly (text message and data rates may apply).





Always Here for Our Community

24/7 Emergency Services in Miami Beach and Aventura

Mount Sinai Medical Center is committed to providing top-quality critical care and easy access to emergency medicine. As Miami Beach's only hospital and emergency care provider, Mount Sinai provides a highly skilled team of specialists, including surgeons and interventionalists trained in advanced minimally invasive neurosurgery. Mount Sinai meets the emergency needs of the community 24 hours a day, 365 days a year.

Mount Sinai's emergency room is backed by the most active cardiac program in South Florida. As one of the hospitals in Miami-Dade's STEMI (ST-segment Elevation Myocardial Infarction) network of hospitals with the equipment, expertise and facilities to administer percutaneous coronary intervention (PCI), we can treat heart attack patients within minutes upon arrival.

At the heart of our mission is our commitment to our community. We are here to meet your health care needs as a committed community partner and as a world-class health care provider.

